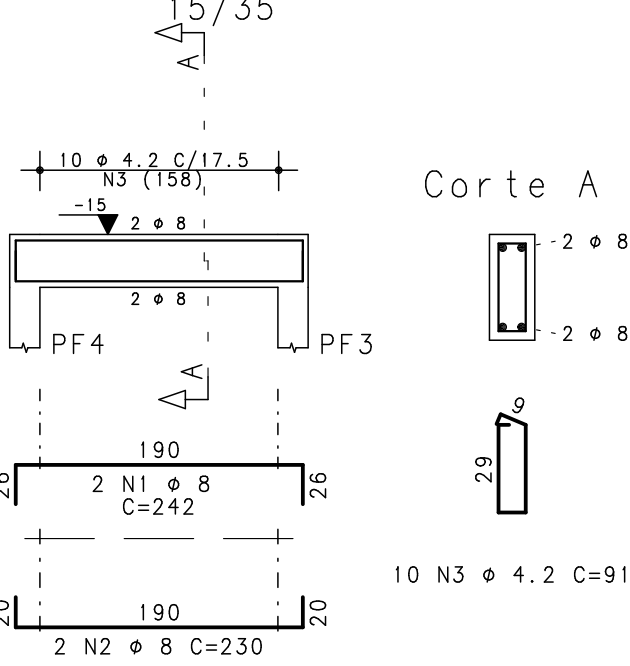
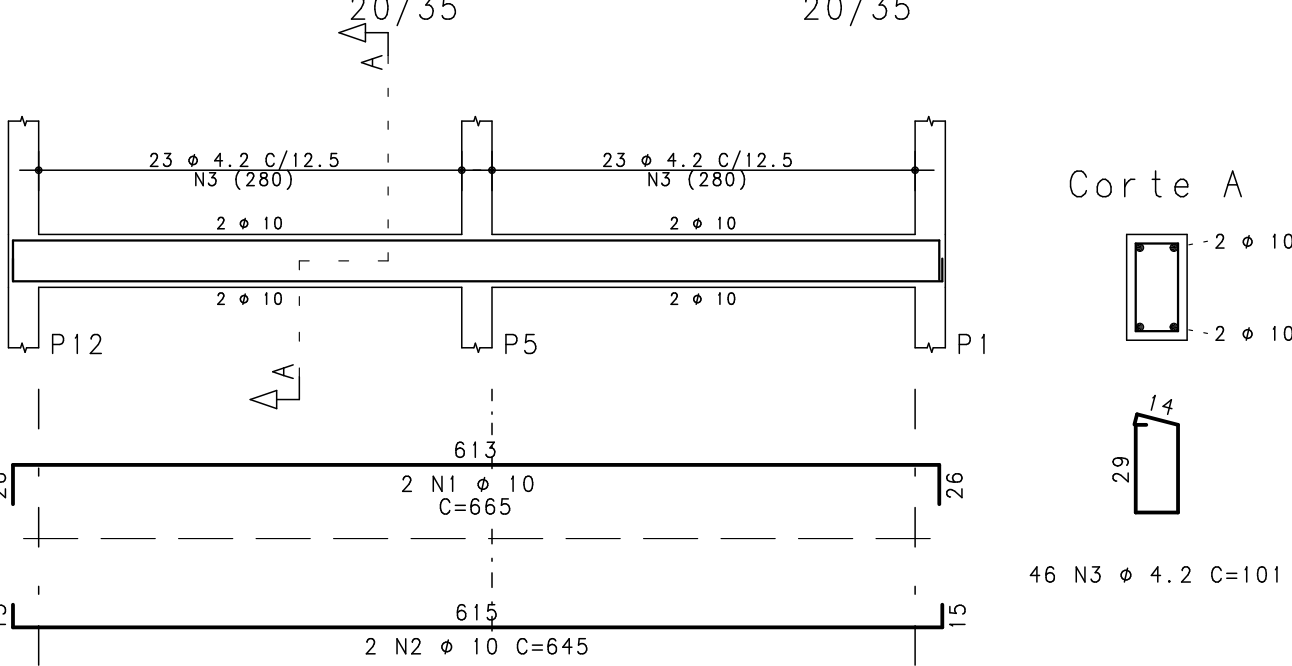


V22



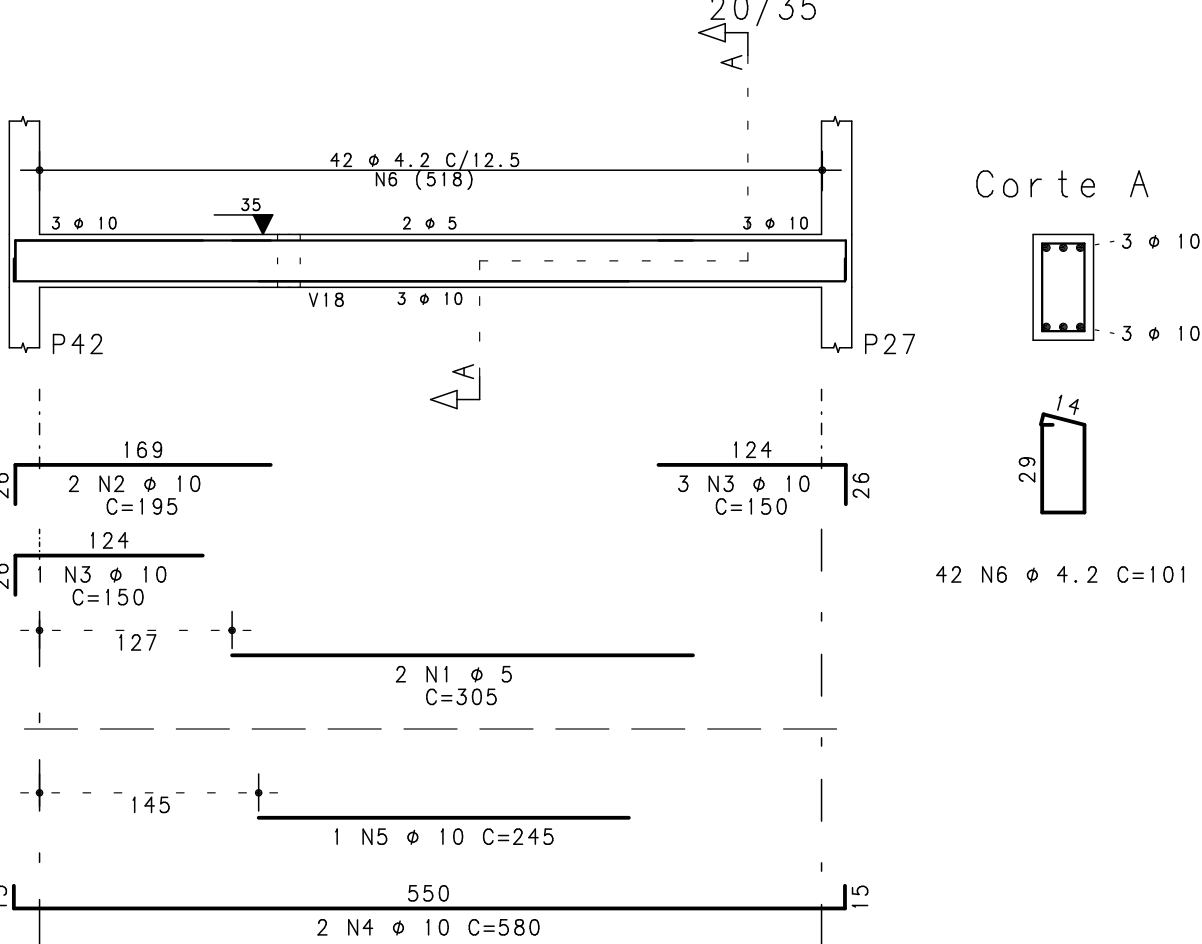
Corte A

V23



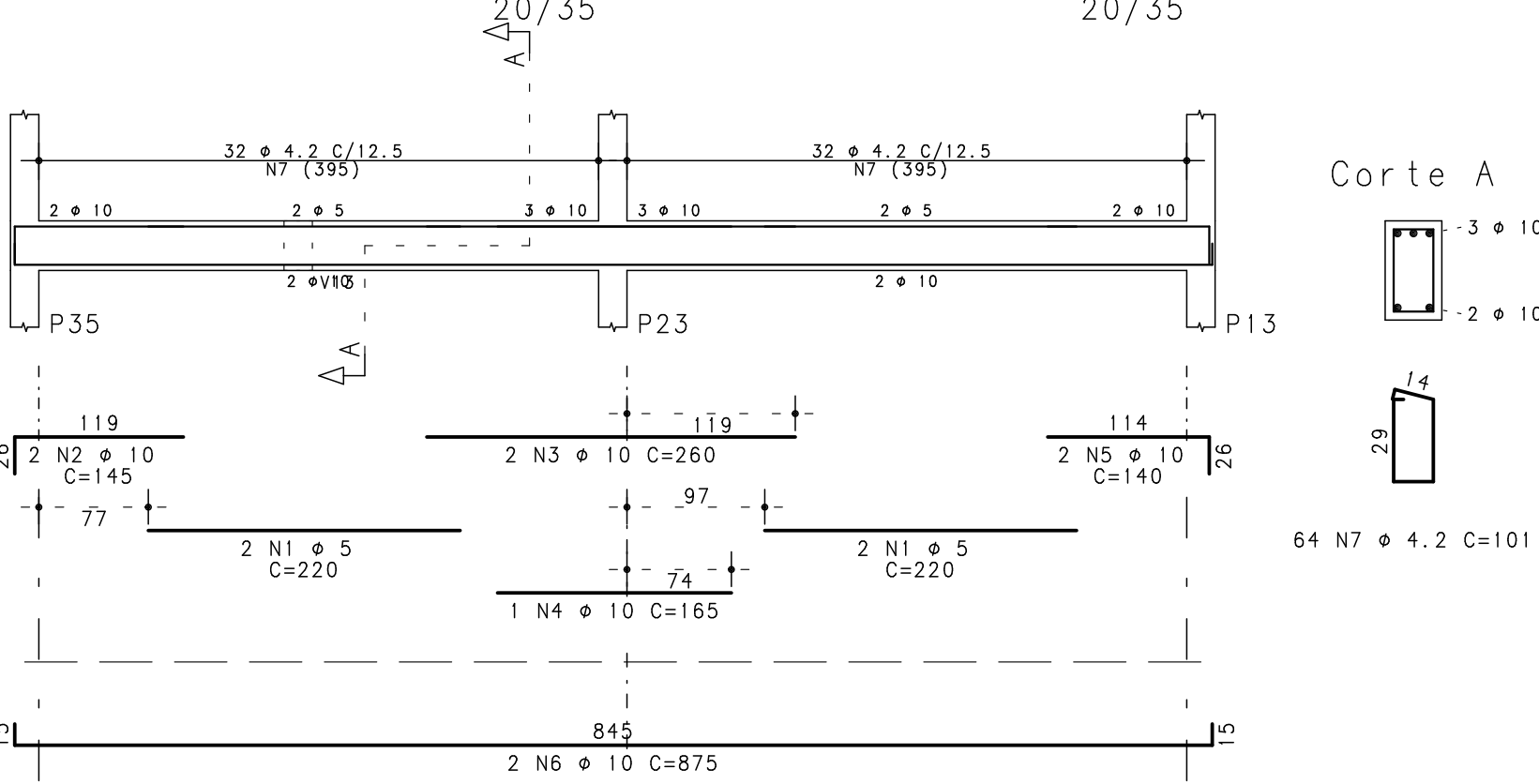
Corte A

V24



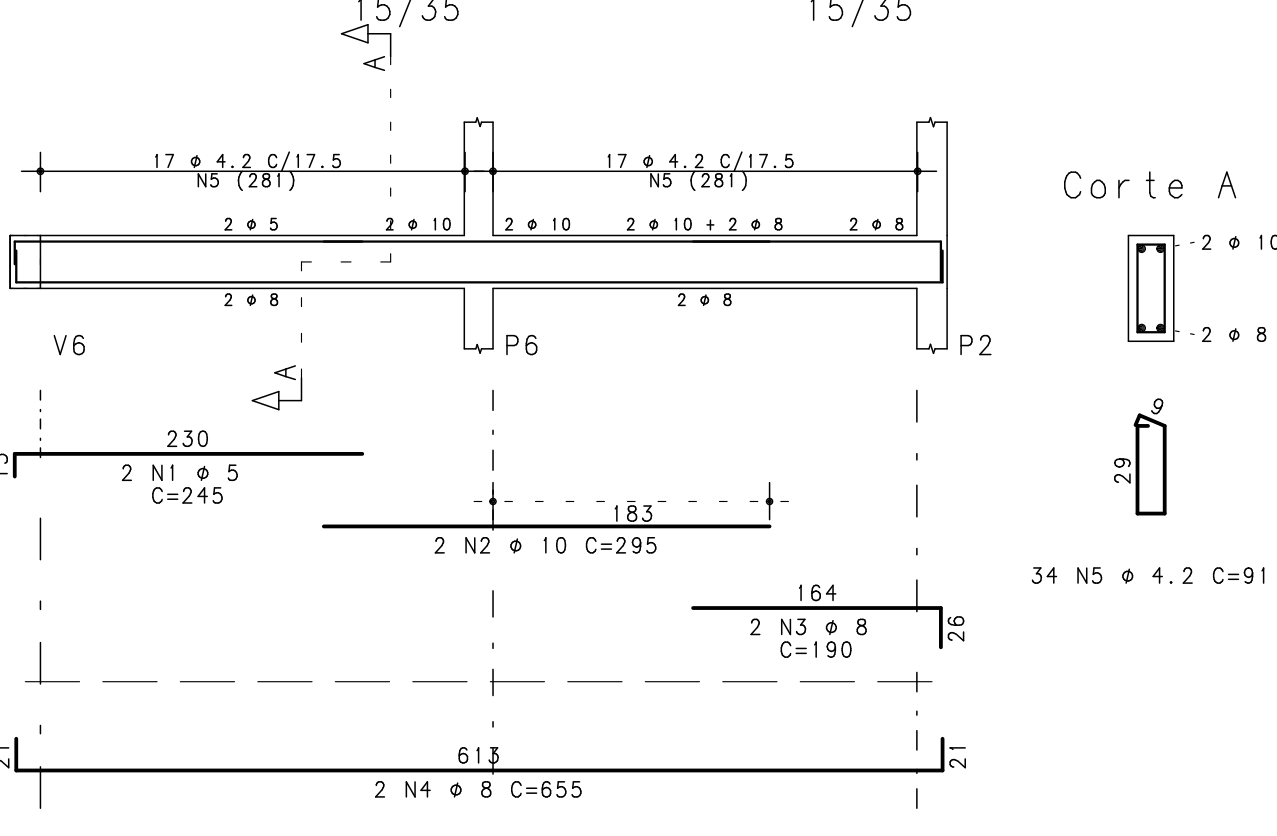
Corte A

V25



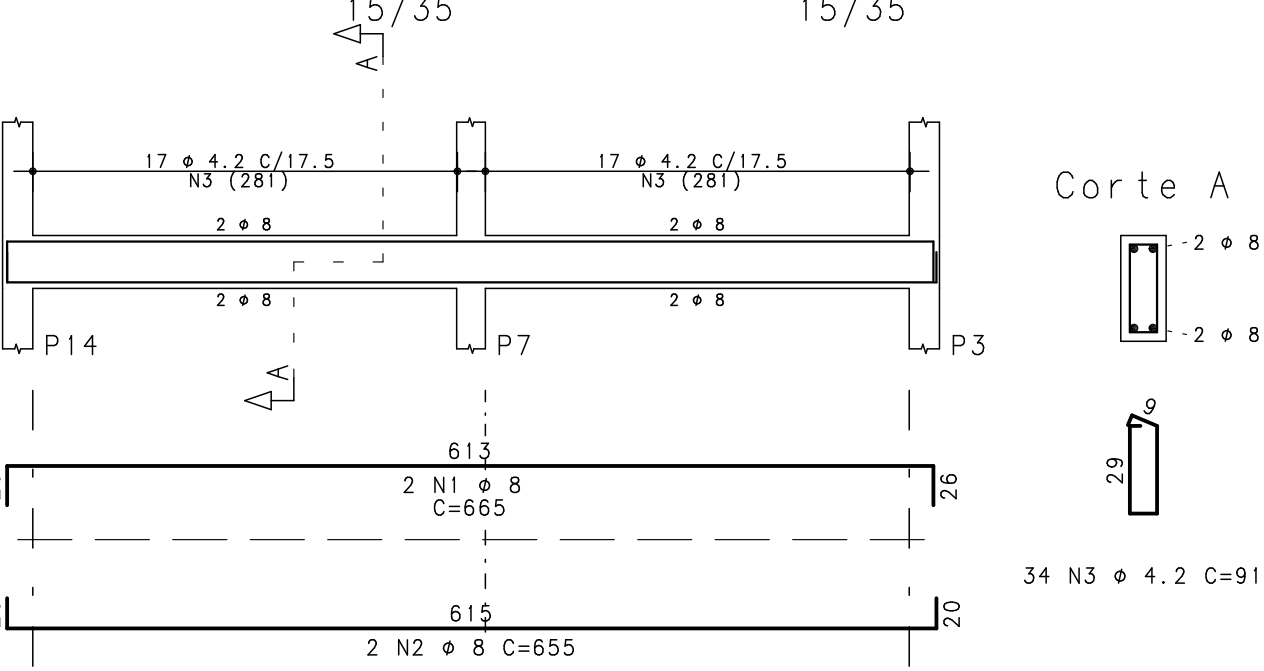
Corte A

V26



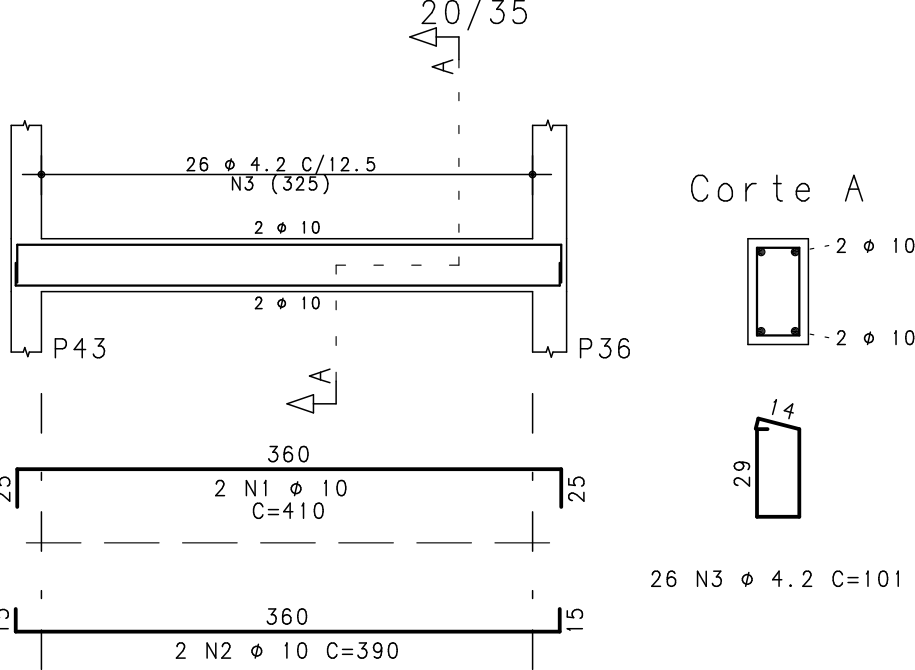
Corte A

V27



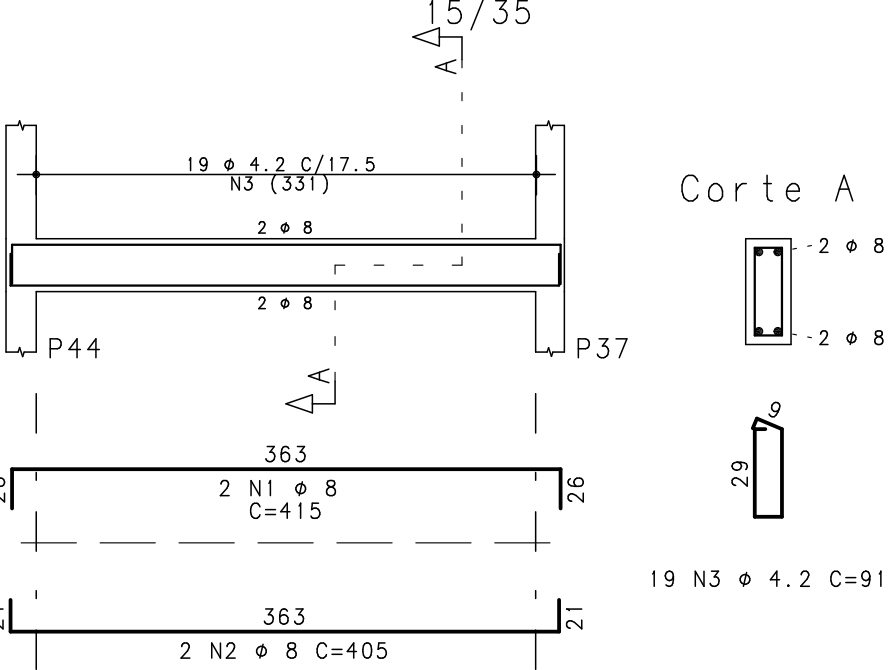
Corte A

V28



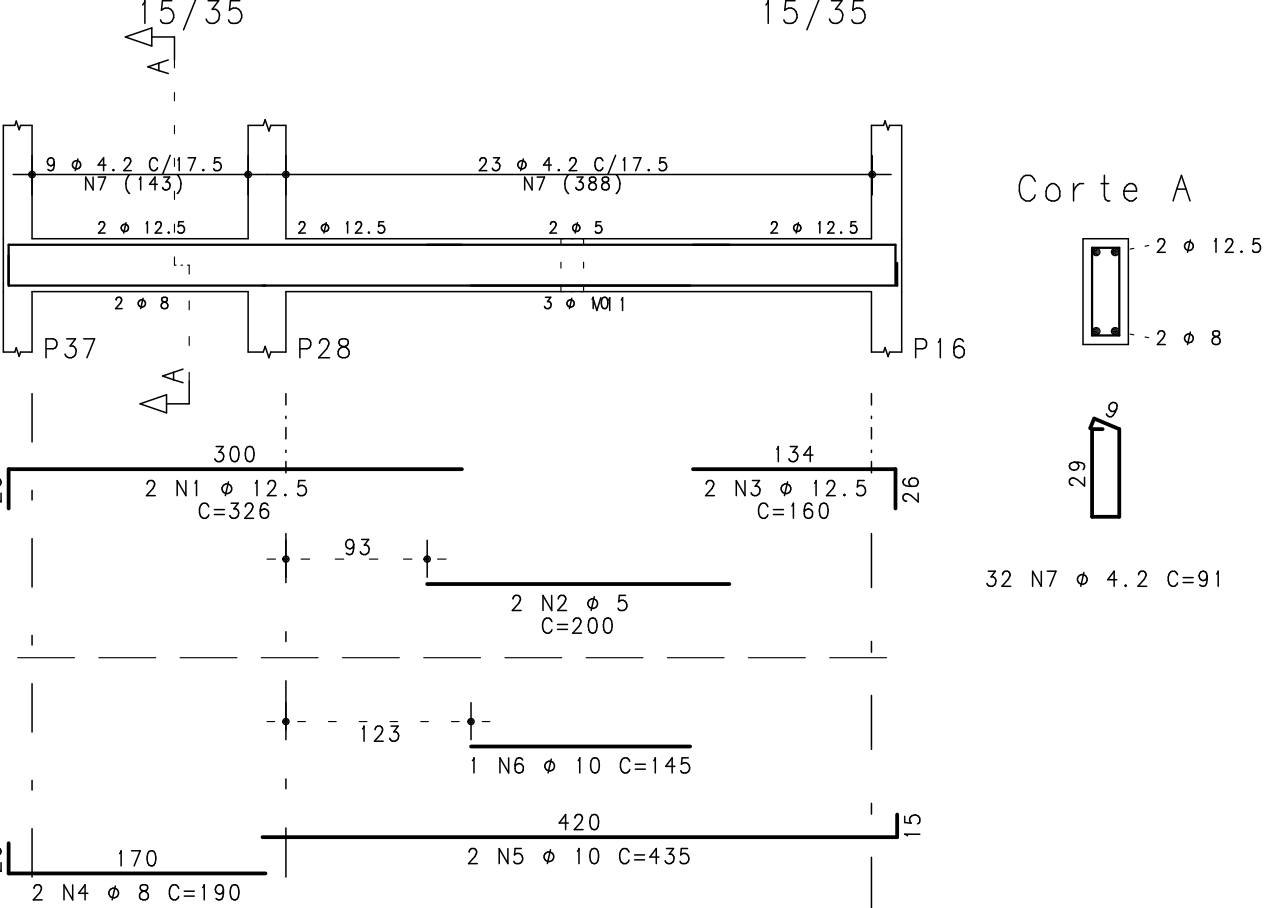
Corte A

V29



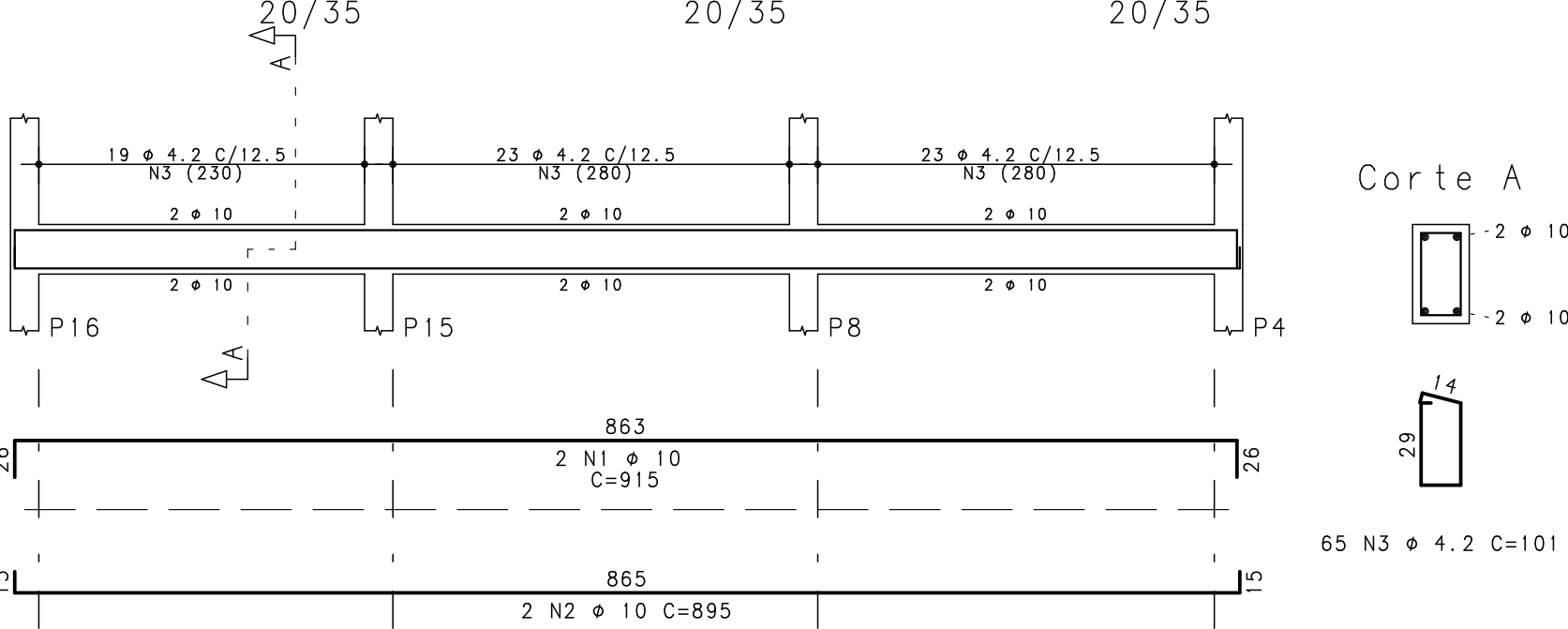
Corte A

V30



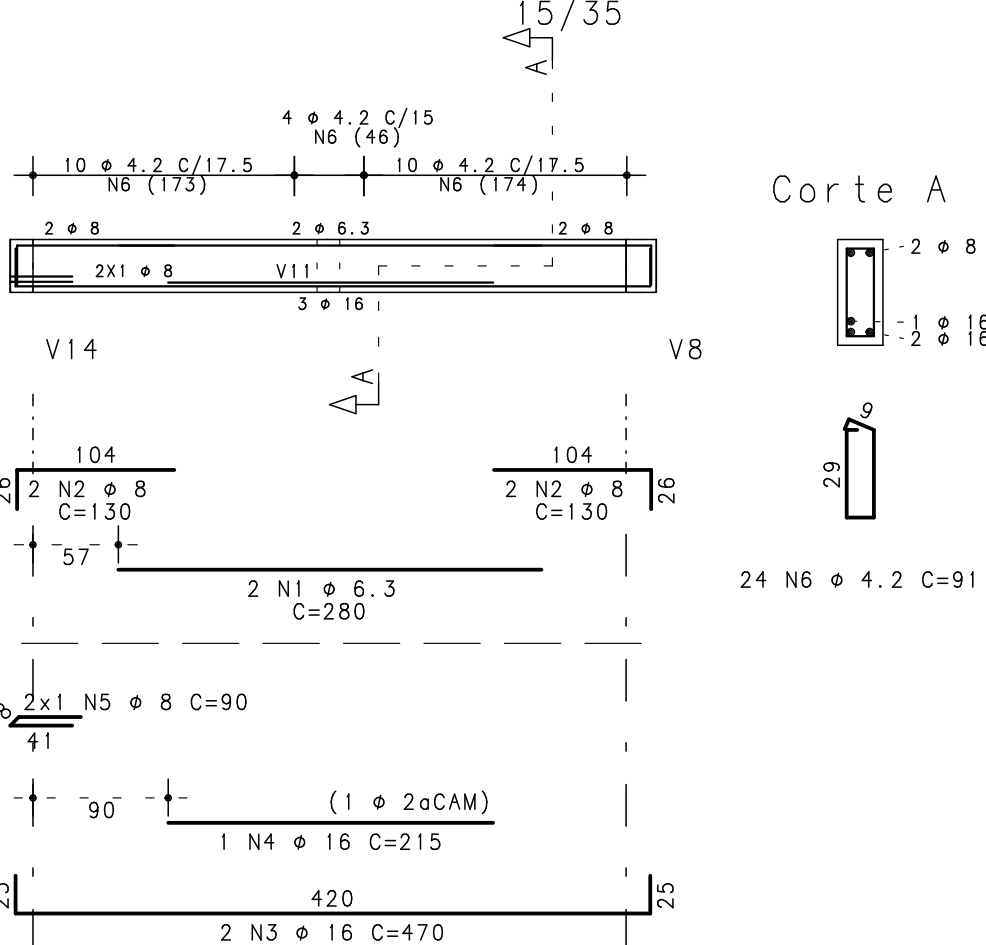
Corte A

V31



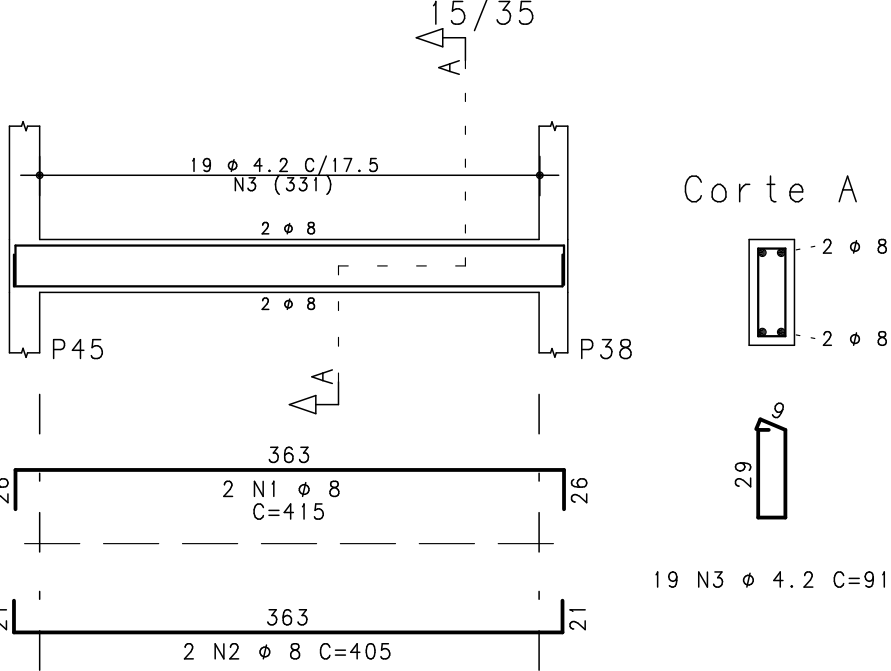
Corte A

V32



Corte A

V33



Corte A



Rua Quinze de Novembro, 553/405
Pelotas - RS - CEP 96215-000
Telefone: (51) 3229-1500
e-mail: fernando@simch.com.br
e-mail: paulo@simch.com.br

Fernando Petrucci Gigante
Eng. Civil - CREA-RS 45232

Paulo Rogério Maffini Simch
Eng. Civil - CREA-RS 78208

2			
1			
0			
Rev	Data	Autor	Assunto

CONCRETO fck = 250 kgf/cm2	SOBRECARGA PREVISTA	OBRA N.º 0001
CLIENTE SECRETARIA DA SAÚDE-PELOTAS		DES. N.º
OBRA UBS Sanga Funda		015
TÍTULO Nível 50 Vigas 3-4		REV. N.º
		00
DATA 2/08/2015	ESCALA 1:50	COORD.
DESENHO UBS-SQ-VIG-015-R00		ENG.º